



**NEXEN**  
NEXEN TIRE

OFFICIAL PARTNER OF  
MANCHESTER CITY FOOTBALL CLUB



**NEXEN** **NEXEN TIRE**

**WINTER TIRE PROGRAM**

**2019 / 2020**

## PROVEN QUALITY BY GLOBAL MAGAZINE TEST



### **WINGUARD Sport 2** "GOOD PRODUCT" BY, AUTOBILD GERMANY

The new Winguard Sport 2 claimed himself successful in a strong competition comparison in between 50 tires and occupies 10th place as Eco Champion.



### **WINGUARD Snow'G WH2** "SATISFACTORY PRODUCT" BY ADAC, GERMANY

The Winguard Snow'G WH2 received the title "Top grade on dry road" by ADAC in the winter tire test. (Dimension 185/65R15 T) Moreover it achieved high rates in fuel consumption and silent riding. Overall it received a "Satisfactory" in a high competitive comparison with major brands.



### **N'blue 4Season** NEXEN TIRE IS THE WINNER OF THE ADAC ALL-SEASON TIRE TEST

ADAC, the largest automobile club in Europe tested 9 current all-season tires in the 175/65R14T dimension and N'blue 4 Season ranked first in the all-season tire test. Amidst the growing demand for all-season tires, Nexen Tire's N'blue 4 Season has proven its superiority, with the best outcome among 9 of the tires put forward by various tire makers.



# OPTIMAL NEW TECHNOLOGY IS MORE THAN JUST A DREAM

## NATURE BASED HIGH PERFORMANCE VEGETABLE OIL

Nature based High Performance Vegetable Oil is developed using processed oil based on sustainable nature substances instead of fossil fuel. It is then mixed with silica oil to reduce viscosity and improve machinability as well as dispersibility.



## Rubber Process Oil

NEXEN TIRE's eco-friendly processed oil is made with sustainable vegetable resources extracted from palm. This increases compatibility between polymer and silica and as a result, improves rolling resistance, as well as snow and ice performance at low temperature when applied on the complete thread.





## OFFICIAL SLEEVE PARTNER OF MANCHESTER CITY FOOTBALL CLUB

Since the beginning 2017/18 season, NEXEN TIRE has been the official sleeve partner of Manchester City Football Club.

The company logo appears at all games of the Team in the Premier League and domestic cup competitions.

The partnership extends over many powerful marketing platforms. Based on that, we've done advertising campaigns on television and print media. Consumers and fans are being engaged via social media platforms.



## NEXEN TIRE SPEED RACING

NEXEN TIRE Speed Racing featuring heavy RVs racing on the track has enjoyed great popularity with many motor sport fans. It showcases various vehicles both at home and abroad, with the utmost driving skill and speed that makes it the home of Korean motor sports.



## BASEBALL

NEXEN TIRE enhances its presence via partnership with Los Angeles Angels which is MLB's renowned team.

## ICE HOCKEY IN THE CZECH REPUBLIC

NEXEN TIRE sponsors Mlada Boleslav, a professional ice hockey team in the Czech Republic. Ice Hockey is the most popular sport in the Czech Republic and Mlada Boleslav is a team that remained strong in Extraliga, one of the world's top 10 ice hockey leagues, since it was established in 1908. Through region-specific sports marketing, NEXEN TIRE is able to enhance its presence in Europe.



## FOOTBALL

NEXEN TIRE sponsors various football clubs around the globe including Manchester City Football Club in UK, Melbourne City Football Club in Australia, New York City Football Club in USA, and SG Eintracht Frankfurt in Germany.



## FORMULA DRIFT

NEXEN TIRE is an official major partner of Formula DRIFT since 2016, the premier United States drifting series. NEXEN TIRE has also renewed partnership for year 2018 and 2019 with Toyota and Papadakis Racing to support Fredric Aasbo, 2015 Formula DRIFT World Champion, currently piloting 2019 Toyota Corolla hatchback/ Rockstar Energy Drink. Also new roster for 2018 with 3 time champion Chris Forsberg with Nissan/ NOS Energy Drink and Toyota driver Ryan Tuerck in Toyota 86. NEXEN TIRE also supports several other Pro 1 drivers in the series (Jhonnattan Castro in Toyota 86, Alec Hohnadell in RAIN X/ Nissan S14, Dan Burkett in Toyota Supra, Kyle Mohan in Mazda MX-5). NEXEN TIRE is also one of semi exclusive tire supplier in Formula Drift Pro 2 series using N'Fera SUR4G.

## VLN 24 HOURS

NEXEN TIRE sponsors promising racers and teams participated in the 24 Hours Race at Nurburgring, which is famous in Europe. This enables NEXEN TIRE to present motor sports fans in Europe with excitement while promoting the excellence of its products.

## CJ SUPERRACE

The world's first BMW M Class race of the CJ SuperRace Championship is held in the Republic of Korea for three years. With a total of 6 rounds, BMW M4 Coupe will present a dynamic racing within the BMW M Class Race.

**NEXEN TIRE** is supplying its tires to  
**PORSCHE THE NEW MACAN** as original fitment

**BEST QUALITY,  
THE WHOLE WORLD WAS OBSERVED**



Volkswagen



RENAULT



IVECO



HYUNDAI



RAM

Jeep

DODGE



RENAULT SAMSUNG  
MOTORS



CHEVROLET



SSANGYONG



MITSUBISHI  
MOTORS



## PORSCHE

VEHICLE	PATTERN
THE NEW MACAN	N'FERA RU1

## VOLKSWAGEN

VEHICLE	PATTERN
JETTA	N'Priz AH8
POLO	N'blue HD Plus
	N'FERA SU1
T-ROC	N'blue HD Plus
CADDY	N'blue Premium
PASSAT	N'FERA AU7

## RENAULT

VEHICLE	PATTERN
CLIO	N'FERA AU5
MEGANE	N'blue HD Plus
TWINGO	N'blue Premium

## DACIA

VEHICLE	PATTERN
LODGY	N'blue HD
DOKKER	N'blue HD

## SKODA

VEHICLE	PATTERN
OCTAVIA	N'blue HD
FABIA	N'blue HD
	N'blue HD Plus
RAPID	N'blue HD
	N'FERA SU1
SCALA	N'FERA SU1
KAROQ	N'FERA RU1
SUPERB	N'blue HD Plus

## SEAT

VEHICLE	PATTERN
ATECA	N'blue HD Plus
IBIZA	N'FERA SU1
	N'blue HD Plus

## IVECO

VEHICLE	PATTERN
DAILY	ROADIAN CT8
DAILY WINTER	WINGUARD WT1

## FIAT

VEHICLE	PATTERN
DUCATO	ROADIAN CT8
500 F/L	N'blue HD Plus
500L	CP671
500X	CP671
	WINGUARD Sport
TIPO	N'blue HD Plus
TORO	N'Priz RH1

## JEEP

VEHICLE	PATTERN
GRAND CHEROKEE	N'Priz RH7α

## DODGE

VEHICLE	PATTERN
DURANGO	N'Priz RH7α
CHALLENGER	N'FERA SUR4G
JOURNEY	N'Priz RH7



# Winter Tire Program

2019 / 2020



**NEXEN TIRE**





# WINGUARD Sport 2

PREMIUM ULTRA-HIGH PERFORMANCE ALPINE /  
STUDLESS PCR



## Benefits



**Excellent Handling & Driving Stability**



**Improved Winter performance**



**Improved Wet performance**

## Key Performance Indicators



3D Winter kerf - Improved snow performance & guarantee block stiffness in dry





Shoulder block groove - Increased side force generation on snow & wet



Zigzag groove - Optimized aquaplaning performance & additional biting edges on snow



Dual pitch - Improved snow & ice performance

Inch	Dimension	LI	SI	XL	PR	Rim Width	RPB			
<b>35 SERIES</b>										
<b>19</b>	<b>275/35R19</b>	100	W	XL	4	9.0~11.0	O	E	E	1(68dB)
	<b>255/35R19</b>	96	V	XL	4	8.5~10.0	O	E	C	2(72dB)
	<b>235/35R19</b>	91	W	XL	4	8.0~9.5	O	E	C	2(71dB)
<b>18</b>	<b>255/35R18</b>	94	V	XL	4	8.5~10.0	O	E	C	1(70dB)
<b>40 SERIES</b>										
<b>20</b>	<b>275/40R20</b>	106	W	XL	4	9.0~11.0	O	E	C	2(72dB)
<b>19</b>	<b>275/40R19</b>	105	V	XL	4	9.0~11.0	O	C	E	2(72dB)
	<b>255/40R19</b>	100	V	XL	4	8.5~10.0	O	E	C	2(71dB)
	<b>245/40R19</b>	98	V	XL	4	8.0~9.5	O	E	C	2(70dB)
<b>18</b>	<b>255/40R18</b>	99	V	XL	4	8.5~10.0	O	E	C	2(71dB)
	<b>245/40R18</b>	97	W	XL	4	8.0~9.5	O	E	B	2(71dB)
	<b>245/40R18</b>	97	V	XL	4	8.0~9.5	O	E	B	2(71dB)
	<b>235/40R18</b>	95	W	XL	4	8.0~9.5	O	E	B	2(71dB)
	<b>235/40R18</b>	95	V	XL	4	8.0~9.5	O	E	C	2(72dB)
	<b>225/40R18</b>	92	V	XL	4	7.5~9.0	O	E	B	1(69dB)
	<b>215/40R18</b>	89	V	XL	4	7.0~8.5	O	E	C	1(69dB)
<b>17</b>	<b>215/40R17</b>	87	V	XL	4	7.0~8.5	O	E	C	1(69dB)
	<b>205/40R17</b>	84	V	XL	4	7.0~8.0	O	E	C	2(70dB)
<b>45 SERIES</b>										
<b>19</b>	<b>245/45R19</b>	102	V	XL	4	7.5~9.0	O	E	C	2(70dB)
	<b>235/45R19</b>	99	V	XL	4	7.5~9.0	O	E	B	2(70dB)
<b>18</b>	<b>255/45R18</b>	103	V	XL	4	8.0~9.5	O	E	C	2(71dB)
	<b>245/45R18</b>	100	V	XL	4	7.5~9.0	O	E	C	2(70dB)
	<b>235/45R18</b>	98	V	XL	4	7.5~9.0	O	E	B	2(70dB)
	<b>225/45R18</b>	95	V	XL	4	7.0~8.5	O	E	B	2(70dB)
	<b>215/45R18</b>	93	W	XL	4	7.0~8.0	O	E	C	1(69dB)
	<b>205/45R18</b>	90	V	XL	4	6.5~7.5	O	E	C	1(69dB)
<b>17</b>	<b>245/45R17</b>	99	V	XL	4	7.5~9.0	O	E	B	2(72dB)
	<b>235/45R17</b>	97	V	XL	4	7.5~9.0	O	E	B	2(72dB)
	<b>225/45R17</b>	94	V	XL	4	7.0~8.5	O	E	B	1(69dB)
	<b>225/45R17</b>	94	H	XL	4	7.0~8.5	O	E	B	1(69dB)
	<b>215/45R17</b>	91	V	XL	4	7.0~8.0	O	E	B	1(69dB)
	<b>205/45R17</b>	88	V	XL	4	6.5~7.5	O	E	C	1(69dB)
<b>50 SERIES</b>										
<b>18</b>	<b>245/50R18</b>	104	V	XL	4	7.0~8.5	O	C	C	2(72dB)
	<b>235/50R18</b>	101	V	XL	4	6.5~8.5	O	C	C	2(70dB)
	<b>225/50R18</b>	99	H	XL	4	6.0~8.0	O	E	C	2(71dB)
<b>17</b>	<b>225/50R17</b>	98	V	XL	4	6.0~8.0	O	E	C	2(70dB)
	<b>215/50R17</b>	95	V	XL	4	6.0~7.5	O	E	C	2(70dB)
	<b>205/50R17</b>	93	V	XL	4	5.5~7.5	O	E	C	2(70dB)
<b>55 SERIES</b>										
<b>19</b>	<b>235/55R19</b>	105	V	XL	4	6.5~8.5	O	C	C	2(70dB)
<b>17</b>	<b>235/55R17</b>	103	V	XL	4	6.5~8.5	O	C	E	2(71dB)
	<b>225/55R17</b>	101	V	XL	4	6.0~8.0	O	E	B	2(71dB)
	<b>225/55R17</b>	97	H		4	6.0~8.0	O	E	C	1(69dB)
	<b>215/55R17</b>	98	V	XL	4	6.0~7.5	O	E	B	2(70dB)
<b>16</b>	<b>205/55R16</b>	91	H		4	5.5~7.5	X	in progress		

RPB = RIM PROTECTION BAR

# WINGUARD Sport 2 SUV

ULTRA-HIGH PERFORMANCE ALPINE SUV



## Benefits



**Excellent Handling & Driving Stability**

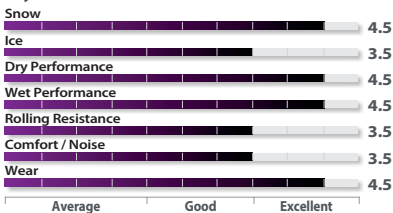


**Improved Winter performance**



**Improved Wet performance**

## Key Performance Indicators



Optimized V shape directional pattern design improves hydroplaning



Circumferential groove optimizes aquaplaning performance and increases biting edges on snow






Balanced footprint shape improves handling performance



**[Single Pitch basis]**  
Dual Pitch and equivalent level pitch for Enhanced stability and braking to improve snow and ice performance



Inch	Dimension	LI	SI	XL	PR	Rim Width	RPB			
<b>50 SERIES</b>										
<b>19</b>	<b>255/50R19</b>	107	V	XL	4	7.0 ~ 9.0	O	C	C	2(71dB)
<b>55 SERIES</b>										
<b>18</b>	<b>255/55R18</b>	109	V	XL	4	7.0 ~ 9.0	O	E	C	2(71dB)
	<b>255/55R18</b>	109	H	XL	4	7.0 ~ 9.0	O	E	C	2(71dB)
	<b>235/55R18</b>	104	H	XL	4	6.5 ~ 8.5	X	C	C	2(72dB)
	<b>225/55R18</b>	102	V	XL	4	6.0 ~ 8.0	O	E	C	2(70dB)
<b>60 SERIES</b>										
<b>18</b>	<b>255/60R18</b>	112	H	XL	4	7.0 ~ 9.0	X	C	C	2(73dB)
	<b>235/60R18</b>	107	H	XL	4	6.5 ~ 8.5	X	C	C	2(72dB)
	<b>235/60R18</b>	103	H		4	6.5 ~ 8.5	X	E	C	2(71dB)
	<b>225/60R18</b>	104	V	XL	4	6.0 ~ 8.0	O	E	C	2(71dB)
<b>17</b>	<b>255/60R17</b>	106	H		4	7.0 ~ 9.0	X	E	C	2(71dB)
	<b>235/60R17</b>	106	H	XL	4	6.5 ~ 8.5	X	E	C	2(71dB)
	<b>235/60R17</b>	102	H		4	6.5 ~ 8.5	X	E	C	2(70dB)
	<b>225/60R17</b>	103	H	XL	4	6.0 ~ 8.0	X	E	C	2(71dB)
	<b>215/60R17</b>	96	H		4	6.0 ~ 7.5	X	E	B	2(71dB)
<b>65 SERIES</b>										
<b>17</b>	<b>265/65R17</b>	112	H		4	7.5 ~ 9.5	X	C	C	2(73dB)
	<b>245/65R17</b>	107	H		4	7.0 ~ 8.5	X	E	C	2(71dB)
	<b>235/65R17</b>	108	V	XL	4	6.5~8.5	O	E	C	2(71dB)
	<b>235/65R17</b>	108	H	XL	4	6.5 ~ 8.5	O	E	C	2(70dB)
	<b>225/65R17</b>	102	H		4	6.0 ~ 8.0	X	E	C	2(70dB)
	<b>225/65R17</b>	102	T		4	6.0 ~ 8.0	X	E	C	2(70dB)
<b>16</b>	<b>255/65R16</b>	109	T		4	7.0 ~ 9.0	X	E	C	2(72dB)
	<b>215/65R16</b>	98	H		4	6.0 ~ 7.5	X	E	B	2(70dB)
	<b>215/65R16</b>	98	T		4	6.0 ~ 7.5	X	E	C	1(69dB)
<b>70 SERIES</b>										
<b>16</b>	<b>265/70R16</b>	112	T		4	7.0 ~ 9.0	X	E	B	2(73dB)
	<b>235/70R16</b>	106	T		4	6.0 ~ 8.0	X	E	C	2(72dB)
<b>15</b>	<b>255/70R15</b>	108	T		4	6.5 ~ 8.5	X	E	C	2(72dB)
<b>75 SERIES</b>										
<b>15</b>	<b>235/75R15</b>	109	T	XL	4	6.0 ~ 8.0	X	E	C	2(72dB)

RPB = RIM PROTECTION BAR

# WINGUARD Snow'G3

PREMIUM ALPINE / STUDLESS PCR



NEW



PC / MID-SIZE



PC / COMPACT



## Benefits



**Excellent Snow Performance**



**Improved Dry Performance**



**Improved Wet Performance**

## Key Performance Indicators

Snow



Ice



Dry Performance



Wet Performance



Comfort



Average

Good

Excellent



Extended Shoulder Block - Extend Shoulder area secured shoulder strength





Adjusted Semi-Groove - Semi Groove on Shoulder and Center Maximizes Snow Traction



Multiple Center and Shoulder Sipe Structure - Applying Different Sipe Structure between Center and Shoulder area improves Grip Performance



Ideal Lateral Groove Design - Cycloid Spiral Helix Design on Lateral Groove Maximizes water Drainage and Improves Ice & snow performance

Inch	Dimension	LI	SI	XL	PR	Rim Width	RPB			
<b>50 SERIES</b>										
<b>15</b>	<b>195/50R15</b>	82	H		4	5.5~7.0	X	E	C	2(72dB)
<b>55 SERIES</b>										
<b>16</b>	<b>215/55R16</b>	93	H		4	6.0~7.5	X	E	B	2(72dB)
	<b>205/55R16</b>	91	H		4	5.5~7.5	X	E	B	2(72dB)
	<b>205/55R16</b>	91	T		4	5.5~7.5	X	E	B	2(72dB)
	<b>195/55R16</b>	87	T		4	5.5~7.0	X	E	C	2(72dB)
<b>15</b>	<b>195/55R15</b>	85	H		4	5.5~7.0	X	E	C	2(72dB)
	<b>185/55R15</b>	82	H		4	5.0~6.5	X	E	C	2(71dB)
<b>60 SERIES</b>										
<b>16</b>	<b>215/60R16</b>	99	H	XL	4	6.0~7.5	X	E	C	2(72dB)
	<b>205/60R16</b>	92	H		4	5.5~7.5	X	E	C	2(72dB)
<b>15</b>	<b>195/60R15</b>	88	H		4	5.5~7.0	X	E	C	2(72dB)
	<b>185/60R15</b>	84	H		4	5.0~6.5	X	E	C	2(71dB)
	<b>185/60R15</b>	88	T	XL	4	5.0~6.5	X	E	C	2(71dB)
<b>65 SERIES</b>										
<b>16</b>	<b>215/65R16</b>	98	H		4	6.0~7.5	X	E	C	2(72dB)
<b>15</b>	<b>205/65R15</b>	94	H		4	5.5~7.5	X	E	B	2(72dB)
	<b>195/65R15</b>	91	H		4	5.5~7.0	X	E	B	2(72dB)
	<b>195/65R15</b>	91	T		4	5.5~7.0	X	E	B	2(72dB)
	<b>185/65R15</b>	88	H		4	5.0~6.5	X	E	C	2(71dB)
	<b>185/65R15</b>	88	T		4	5.0~6.5	X	E	C	2(71dB)
	<b>175/65R15</b>	84	T		4	5.0~6.0	X	E	C	2(71dB)
<b>14</b>	<b>185/65R14</b>	86	T		4	5.0~6.5	X	E	C	2(71dB)
	<b>175/65R14</b>	82	T		4	5.0~6.0	X	E	C	2(71dB)
	<b>155/65R14</b>	75	T		4	4.5~5.5	X	E	C	2(71dB)
<b>70 SERIES</b>										
<b>16</b>	<b>215/70R16</b>	100	T		4	5.5~7.0	X	E	C	2(72dB)
<b>14</b>	<b>175/70R14</b>	88	T	XL	4	4.5~6.0	X	E	C	2(71dB)
	<b>165/70R14</b>	81	T		4	4.0~5.5	X	E	C	2(71dB)

RPB = RIM PROTECTION BAR

# WINGUARD SNOW'G WH2

PREMIUM ALPINE / STUDLESS PCR



## Benefits



**Excellent Snow Performance**

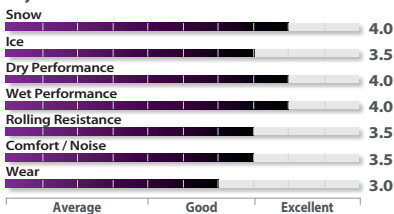


**Improved Dry Performance**



**Improved Wet Performance**

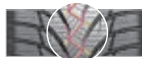
## Key Performance Indicators



3D sipe - Enhanced braking performance



Zigzag edge block - Enhanced traction performance




Dual Z shape - Enhanced lateral snow grip



V shaped groove - Enhanced wet & hydro performance



Inch	Dimension	LI	SI	XL	PR	Rim Width	RPB			
<b>50 SERIES</b>										
<b>17</b>	<b>225/50R17</b>	98	V	XL	4	6.0~8.0	O	C	B	2(72dB)
<b>15</b>	<b>195/50R15</b>	82	H		4	5.5~7.0	X	E	C	1(69dB)
<b>55 SERIES</b>										
<b>16</b>	<b>225/55R16</b>	95	H		4	6.0~8.0	X	C	B	2(72dB)
	<b>215/55R16</b>	93	H		4	6.0~7.5	X	E	B	2(71dB)
	<b>205/55R16</b>	91	H		4	5.5~7.5	X	E	C	2(70dB)
	<b>205/55R16</b>	91	T		4	5.5~7.5	X	E	B	2(70dB)
	<b>205/55R16</b>	94	V	XL	4	5.5~7.5	X	E	C	2(70dB)
	<b>195/55R16</b>	87	T		4	5.5~7.0	X	E	B	2(70dB)
	<b>185/55R16</b>	87	T	XL	4	5.0~6.5	X	C	B	2(71dB)
<b>15</b>	<b>195/55R15</b>	89	H	XL	4	5.5~7.0	X	E	C	1(69dB)
	<b>195/55R15</b>	85	H		4	5.5~7.0	X	E	B	2(70dB)
	<b>185/55R15</b>	86	H	XL	4	5.0~6.5	X	E	B	2(71dB)
	<b>185/55R15</b>	82	H		4	5.0~6.5	X	E	C	1(68dB)
<b>14</b>	<b>185/55R14</b>	80	T		4	5.0~6.5	X	E	C	2(69dB)
<b>60 SERIES</b>										
<b>16</b>	<b>235/60R16</b>	100	H		4	6.5~8.5	X	C	C	2(70dB)
	<b>215/60R16</b>	99	H	XL	4	6.0~7.5	X	C	E	2(71dB)
	<b>205/60R16</b>	92	H		4	5.5~7.5	X	C	C	2(71dB)
	<b>195/60R16</b>	89	H		4	5.5~7.0	X	E	B	2(70dB)
	<b>185/60R16</b>	86	H		4	5.0~6.5	X	E	C	2(69dB)
<b>15</b>	<b>205/60R15</b>	91	H		4	5.5~7.5	X	E	C	2(71dB)
	<b>205/60R15</b>	91	T		4	5.5~7.5	X	E	B	2(70dB)
	<b>195/60R15</b>	88	H		4	5.5~7.0	X	E	B	2(71dB)
	<b>195/60R15</b>	88	T		4	5.5~7.0	X	E	B	2(71dB)
	<b>185/60R15</b>	84	H		4	5.0~6.5	X	E	B	2(70dB)
	<b>185/60R15</b>	88	T	XL	4	5.0~6.5	X	E	E	1(68dB)
	<b>185/60R15</b>	84	T		4	5.0~6.5	X	E	C	2(71dB)
	<b>175/60R15</b>	81	H		4	5.0~6.0	X	E	C	2(69dB)
<b>14</b>	<b>185/60R14</b>	82	T		4	5.0~6.5	X	E	B	2(69dB)

RPB = RIM PROTECTION BAR

# WINGUARD SNOW'G WH2

PREMIUM ALPINE / STUDLESS PCR



## Benefits



**Excellent Snow Performance**

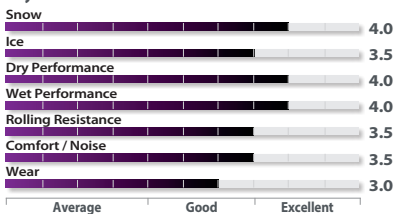


**Improved Dry Performance**

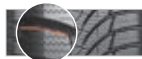


**Improved Wet Performance**

## Key Performance Indicators



3D sipe - Enhanced braking performance



Zigzag edge block - Enhanced traction performance



Dual Z shape - Enhanced lateral snow grip



V shaped groove - Enhanced wet & hydro performance

Inch	Dimension	LI	SI	XL	PR	Rim Width	RPB			
<b>65 SERIES</b>										
<b>16</b>	<b>215/65R16</b>	98	H		4	6.0~7.5	X	C	B	1(69dB)
<b>15</b>	<b>205/65R15</b>	94	H		4	5.5~7.5	X	C	B	2(71dB)
	<b>205/65R15</b>	99	T	XL	4	5.5~7.5	X	C	E	2(70dB)
	<b>195/65R15</b>	91	H		4	5.5~7.0	X	E	C	2(71dB)
	<b>195/65R15</b>	95	T	XL	4	5.5~7.0	X	E	E	2(70dB)
	<b>195/65R15</b>	91	T		4	5.5~7.0	X	E	C	2(71dB)
	<b>185/65R15</b>	88	H		4	5.0~6.5	X	E	C	2(71dB)
	<b>185/65R15</b>	92	T	XL	4	5.0~6.5	X	E	C	1(68dB)
	<b>185/65R15</b>	88	T		4	5.0~6.5	X	E	C	2(71dB)
	<b>175/65R15</b>	84	T		4	5.0~6.0	X	E	C	2(70dB)
	<b>185/65R14</b>	86	T		4	5.0~6.5	X	E	B	2(70dB)
<b>14</b>	<b>175/65R14</b>	86	T	XL	4	5.0~6.0	X	E	B	2(70dB)
	<b>175/65R14</b>	82	T		4	5.0~6.0	X	E	C	2(70dB)
	<b>165/65R14</b>	79	T		4	4.5~6.0	X	E	C	2(69dB)
	<b>155/65R14</b>	79	T	XL	4	4.5~5.5	X	E	C	2(69dB)
	<b>155/65R14</b>	75	T		4	4.5~5.5	X	F	E	2(69dB)
	<b>175/65R13</b>	80	T		4	5.0~6.0	X	E	E	2(69dB)
<b>13</b>	<b>165/65R13</b>	77	T		4	4.5~6.0	X	E	E	1(68dB)
	<b>155/65R13</b>	73	T		4	4.5~5.5	X	F	E	1(68dB)
<b>70 SERIES</b>										
<b>16</b>	<b>225/70R16</b>	103	H		4	6.0~7.5	X	E	B	2(72dB)
	<b>225/70R16</b>	103	T		4	6.0~7.5	X	E	C	2(71dB)
	<b>215/70R16</b>	100	T		4	5.5~7.0	X	C	B	2(72dB)
<b>14</b>	<b>195/70R14</b>	91	T		4	5.0~6.5	X	E	C	1(69dB)
	<b>185/70R14</b>	88	T		4	4.5~6.0	X	E	B	2(70dB)
	<b>175/70R14</b>	88	T	XL	4	4.5~6.0	X	E	B	2(69dB)
	<b>165/70R14</b>	85	T	XL	4	4.0~5.5	X	E	C	2(70dB)
	<b>165/70R14</b>	81	T		4	4.0~5.5	X	E	C	2(69dB)
	<b>175/70R13</b>	82	T		4	4.5~6.0	X	E	E	1(68dB)
<b>13</b>	<b>165/70R13</b>	79	T		4	4.0~5.5	X	E	E	2(69dB)
	<b>155/70R13</b>	75	T		4	4.0~5.0	X	E	E	2(69dB)
	<b>145/70R13</b>	71	T		4	3.5~5.0	X	F	E	2(69dB)
<b>80 SERIES</b>										
<b>13</b>	<b>155/80R13</b>	79	T		4	4.0~5.0	X	F	C	2(69dB)
	<b>145/80R13</b>	75	T		4	3.5~5.0	X	F	E	2(69dB)

RPB = RIM PROTECTION BAR

# WINGUARD WT1

ALPINE / STUDLESS COMMERCIAL LTR



## Benefits



**Excellent Snow Performance**



**Long Lasting Tread Life**



**Excellent Wet Performance**



2 zigzag & 1 straight grooves - Excellent drainage & wet braking



Multi & step sipe - Enhanced snow performance



Chamfer applied sidewall form - Reinforced side protector & snow bite



3 saw line - Optimum grip in all direction

## Key Performance Indicators





# WINGUARD WT1

Inch	Dimension	LI	SI	XL	PR	Rim Width	RPB				OE
<b>60 SERIES</b>											
<b>16</b>	<b>215/60R16</b>	103/101	T	C	6	6.0~7.0	X	E	B	2(73dB)	
	<b>195/60R16</b>	99/97	T	C	6	5.5~6.5	X	E	C	2(73dB)	
<b>65 SERIES</b>											
<b>16</b>	<b>235/65R16</b>	121/119	R	C	10	6.5~7.5	X	E	B	2(73dB)	
	<b>235/65R16</b>	115/113	R	C	8	6.5~7.5	X	C	B	2(72dB)	
	<b>225/65R16</b>	112/110	R	C	8	6.0~7.0	X	C	B	2(72dB)	IVECO DAILY
	<b>215/65R16</b>	109/107	R	C	8	6.0~7.0	X	C	B	2(71dB)	
	<b>205/65R16</b>	107/105	T	C	8	5.5~6.5	X	E	C	2(72dB)	
	<b>195/65R16</b>	104/102	T	C	8	5.5~6.0	X	C	B	2(72dB)	
<b>15</b>	<b>205/65R15</b>	102/100	R	C	6	5.5~6.5	X	E	B	2(72dB)	
<b>14</b>	<b>175/65R14</b>	90/88	T	C	6	5.0~5.5	X	E	B	1(70dB)	
<b>70 SERIES</b>											
<b>16</b>	<b>215/70R16</b>	108/106	R	C	6	5.5~7.0	X	E	B	2(72dB)	
<b>15</b>	<b>225/70R15</b>	112/110	R	C	8	6.0~7.0	X	E	B	2(72dB)	
	<b>215/70R15</b>	109/107	R	C	8	5.5~7.0	X	E	C	2(71dB)	
	<b>205/70R15</b>	106/104	R	C	8	5.5~6.5	X	E	B	2(72dB)	
	<b>195/70R15</b>	104/102	R	C	8	5.0~6.0	X	E	B	2(72dB)	
<b>14</b>	<b>175/70R14</b>	95/93	T	C	6	4.5~5.5	X	E	B	1(69dB)	
	<b>165/70R14</b>	89/87	R	C	6	4.5~5.0	X	E	B	1(69dB)	
<b>75 SERIES</b>											
<b>16</b>	<b>225/75R16</b>	121/120	R	C	10	6.0~7.0	X	E	B	2(73dB)	
	<b>215/75R16</b>	116/114	R	C	10	5.5~7.0	X	E	C	2(73dB)	
	<b>205/75R16</b>	113/111	R	C	10	5.5~6.5	X	E	C	2(72dB)	
	<b>195/75R16</b>	107/105	R	C	8	5.0~6.0	X	C	C	2(72dB)	
	<b>185/75R16</b>	104/102	R	C	8	5.0~6.0	X	E	C	1(70dB)	
	<b>175/75R16</b>	101/99	R	C	8	4.5~5.5	X	F	C	1(70dB)	
<b>80 SERIES</b>											
<b>15</b>	<b>195R15</b>	106/104	P	C	8	5.0~6.0	X	E	C	2(72dB)	
<b>14</b>	<b>195R14</b>	106/104	R	C	8	5.0~6.0	X	E	B	1(70dB)	
	<b>185R14</b>	102/100	R	C	8	5.0~6.0	X	E	C	1(69dB)	
<b>13</b>	<b>155R13</b>	90/88	R	C	8	4.0~5.0	X	F	C	2(72dB)	

RPB = RIM PROTECTION BAR

# **N blue 4Season**

**HIGH PERFORMANCE ALL WEATHER TIRE  
FOR PASSENGER CARS!**



## **Maximized Wet Performance**

Maximized wet performance with optimized combination of new generation solution-SBR and high grip resin to improve wet braking and handling.



## **Balanced Snow Performance**

New tread compound provides well balanced performance by using fine grade and applying a high content of silica with new mixing process.



## **All Season Performance**

To achieve all season performance of tire, controlled dynamic properties of compound provides harmony of stiffness and flexibility over a wide temperature range.

**ADAC**

**satisfactory**  
(2.7)

## Test

ADAC, the largest automobile club in Europe tested 9 current all-season tires in the 175/65R14T dimension and N'blue 4 Season ranked **first in the all-season tire test**. Amidst the growing demand for all-season tires, Nexen Tire's N'blue 4 Season has proven its superiority, with the best outcome among 9 of the tires put forward by various tire makers.

# N blue 4Season

## EUROPEAN ALL WEATHER



### Benefits



**Excellent Dry Performance**

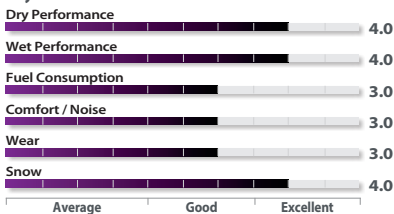


**Excellent Wet Performance**



**Excellent Snow Performance**

### Key Performance Indicators



Round & V Type Groove -  
Improved drainage and snow  
slush performance



Multi-Season Sipe -  
Optimized all-season grip



3D Sipe -  
All-season block rigidity



Uniform grip shape -  
Providing optimal grip



Inch	Dimension	LI	SI	XL	PR	Rim Width	RPB			
<b>40 SERIES</b>										
<b>18</b>	<b>225/40R18</b>	92	V	XL	4	7.5~9.0	O	C	C	2(70dB)
<b>45 SERIES</b>										
<b>17</b>	<b>235/45R17</b>	97	V	XL	4	7.5~9.0	O	E	E	2(70dB)
	<b>225/45R17</b>	94	V	XL	4	7.0~8.5	O	E	B	1(69dB)
	<b>215/45R17</b>	91	W	XL	4	7.0~8.0	O	E	C	2(70dB)
<b>50 SERIES</b>										
<b>18</b>	<b>* 235/50R18</b>	101	V	XL	4	6.5~8.5	O	C	C	2(70dB)
<b>17</b>	<b>225/50R17</b>	98	V	XL	4	6.0~8.0	O	E	B	1(69dB)
	<b>225/50R17</b>	94	V		4	6.0~8.0	O	E	B	1(69dB)
	<b>205/50R17</b>	93	W	XL	4	5.5~7.5	O	C	C	2(71dB)
<b>15</b>	<b>195/50R15</b>	82	H		4	5.5~7.0	X	E	C	1(68dB)
<b>55 SERIES</b>										
<b>18</b>	<b>* 255/55R18</b>	109	V	XL	4	7.0~9.0	O	E	C	2(71dB)
<b>17</b>	<b>* 235/55R17</b>	103	V	XL	4	6.5~8.5	O	C	C	2(70dB)
	<b>225/55R17</b>	101	V	XL	4	6.0~8.0	X	C	C	2(71dB)
	<b>215/55R17</b>	98	V	XL	4	6.0~7.5	X	C	C	2(71dB)
	<b>225/55R16</b>	95	H		4	6.0~8.0	X	E	B	1(69dB)
<b>16</b>	<b>215/55R16</b>	97	V	XL	4	6.0~7.5	X	E	B	1(69dB)
	<b>205/55R16</b>	94	V	XL	4	5.5~7.5	X	E	B	1(69dB)
	<b>205/55R16</b>	94	H	XL	4	5.5~7.5	X	E	B	1(68dB)
	<b>205/55R16</b>	91	H		4	5.5~7.5	X	E	B	1(69dB)
	<b>195/55R16</b>	91	H	XL	4	5.5~7.0	X	E	C	2(70dB)
	<b>195/55R15</b>	85	H		4	5.5~7.0	X	E	B	1(69dB)
<b>15</b>	<b>185/55R15</b>	82	H		4	5.0~6.5	X	E	C	2(69dB)

**\* STARTING SEP. 2019**

RPB = RIM PROTECTION BAR

# N blue 4Season

## EUROPEAN ALL WEATHER



### Benefits



**Excellent Dry Performance**

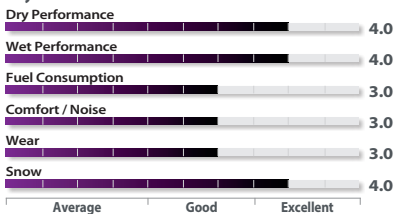


**Excellent Wet Performance**



**Excellent Snow Performance**

### Key Performance Indicators



Round & V Type Groove -  
Improved drainage and snow  
slush performance





Multi-Season Sipe -  
Optimized all-season grip



3D Sipe -  
All-season block rigidity



Uniform grip shape -  
Providing optimal grip

Inch	Dimension	LI	SI	XL	PR	Rim Width	RPB			
<b>60 SERIES</b>										
18	* 235/60R18	107	V	XL	4	6.5~8.5	O	C	C	2(70dB)
17	215/60R17	96	H		4	6.0~7.5	X	E	B	2(70dB)
16	215/60R16	95	H		4	6.0~7.5	X	C	B	1(69dB)
	205/60R16	96	H	XL	4	5.5~7.5	X	E	B	2(70dB)
15	205/60R15	91	H		4	5.5~7.5	X	E	B	2(70dB)
	195/60R15	88	H		4	5.5~7.0	X	E	B	2(70dB)
	185/60R15	88	H	XL	4	5.0~6.5	X	E	B	2(69dB)
14	195/60R14	86	H		4	5.5~7.0	X	E	B	1(68dB)
	195/60R14	86	T		4	5.5~7.0	X	E	C	1(69dB)
	185/60R14	82	H		4	5.0~6.5	X	E	C	2(69dB)
	185/60R14	82	T		4	5.0~6.5	X	E	E	2(69dB)
	165/60R14	75	H		4	4.5~6.0	X	E	C	1(67dB)
<b>65 SERIES</b>										
17	* 235/65R17	108	V	XL	4	6.5~8.5	O	E	C	2(70dB)
	* 225/65R17	102	H		4	6.0~8.0	X	E	C	2(70dB)
16	215/65R16	98	H		4	6.0~7.5	X	E	B	1(69dB)
15	195/65R15	95	T	XL	4	5.5~7.0	X	E	B	1(68dB)
	195/65R15	91	V		4	5.5~7.0	X	E	B	1(68dB)
	195/65R15	91	H		4	5.5~7.0	X	E	B	1(68dB)
	195/65R15	91	T		4	5.5~7.0	X	E	B	1(68dB)
	185/65R15	88	H		4	5.0~6.5	X	E	B	2(69dB)
	185/65R15	88	T		4	5.0~6.5	X	E	B	2(69dB)
	175/65R15	84	T		4	5.0~6.0	X	E	B	2(69dB)
14	185/65R14	86	T		4	5.0~6.5	X	E	C	2(69dB)
	175/65R14	82	T		4	5.0~6.0	X	E	C	2(69dB)
	165/65R14	79	T		4	4.5~6.0	X	E	C	1(68dB)
	155/65R14	75	T		4	4.5~5.5	X	E	C	1(68dB)
13	175/65R13	80	T		4	5.0~6.0	X	E	B	2(69dB)
<b>70 SERIES</b>										
16	* 215/70R16	100	H		4	5.0~7.0	X	E	C	2(70dB)
14	175/70R14	84	T		4	4.5~6.0	X	E	B	2(69dB)
13	175/70R13	82	T		4	4.5~6.0	X	E	C	1(68dB)
	155/70R13	75	T		4	4.0~5.0	X	E	C	2(69dB)

\* STARTING SEP. 2019

RPB = RIM PROTECTION BAR

## **NEXEN TIRE GERMANY**

Reifenhandel-Niederlassung Deutschland

Lise-Meitner-Str. 1 | 65779 Kelkheim

**T** +49(0)6195 9713 0 **E-mail** marketing.nte@nexentire.com

**nexentire.com/de**

## **NEXEN TIRE EUROPE TECHNICAL CENTER**

Lise-Meitner-Str. 1 | 65779 Kelkheim

**T** +49(0)6195 9713 0 **E-mail** marketing.nte@nexentire.com

**nexentire.com/de**

## **NEXEN TIRE ITALY**

Centro Milanofiori, Strada 6, Palazzo N1 | 20089 Rozzano

**T** +39 02 89292 71 **E-mail** nexentireitalia@nexentire.com

**nexentire.com/it**

## **NEXEN TIRE CZECH REPUBLIC**

Bucharova 1314/8, 158 00 Praha 13, Czech Republic

**T** +420 242 493 216 **E-mail** eslee@nexentire.com

**nexentire.com/cz**

## **NEXEN TIRE FRANCE**

Le Solaris, 210 Avenue Jean Jaurès | 69007 Lyon

**T** +33(0)4 8109 1113 **E-mail** nexenlyon@nx-france.fr

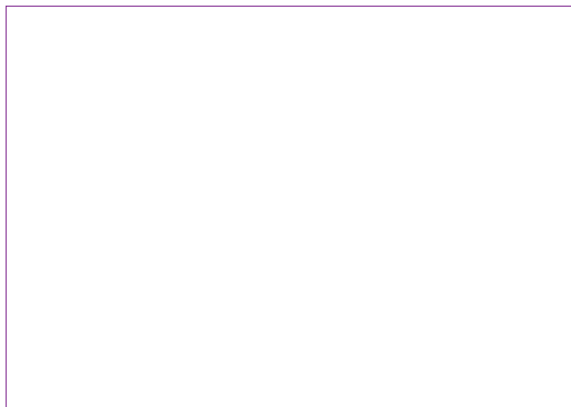
**nexentire.com/fr**

## **NEXEN TIRE SCANDINAVIA**

Kanalvägen 7B, Infra City | 19461 Upplands Väsby

**T** +46(0)8 590 80 800 **E-mail** peter.choi@nexentire.com

**www.nexentire.com**



# **NEXEN TIRE**